

Research Support Officers

Policy Priorities

- ✓ Support activities in Coalition for Advancing Research Assessment (ERA 3 and CoARA)
- ✓ Improve skills of Research Management staff (ERA 17)
- ✓ Shaping EU Framework Programme 10 with accessibility as a priority (ERA 4, 16)

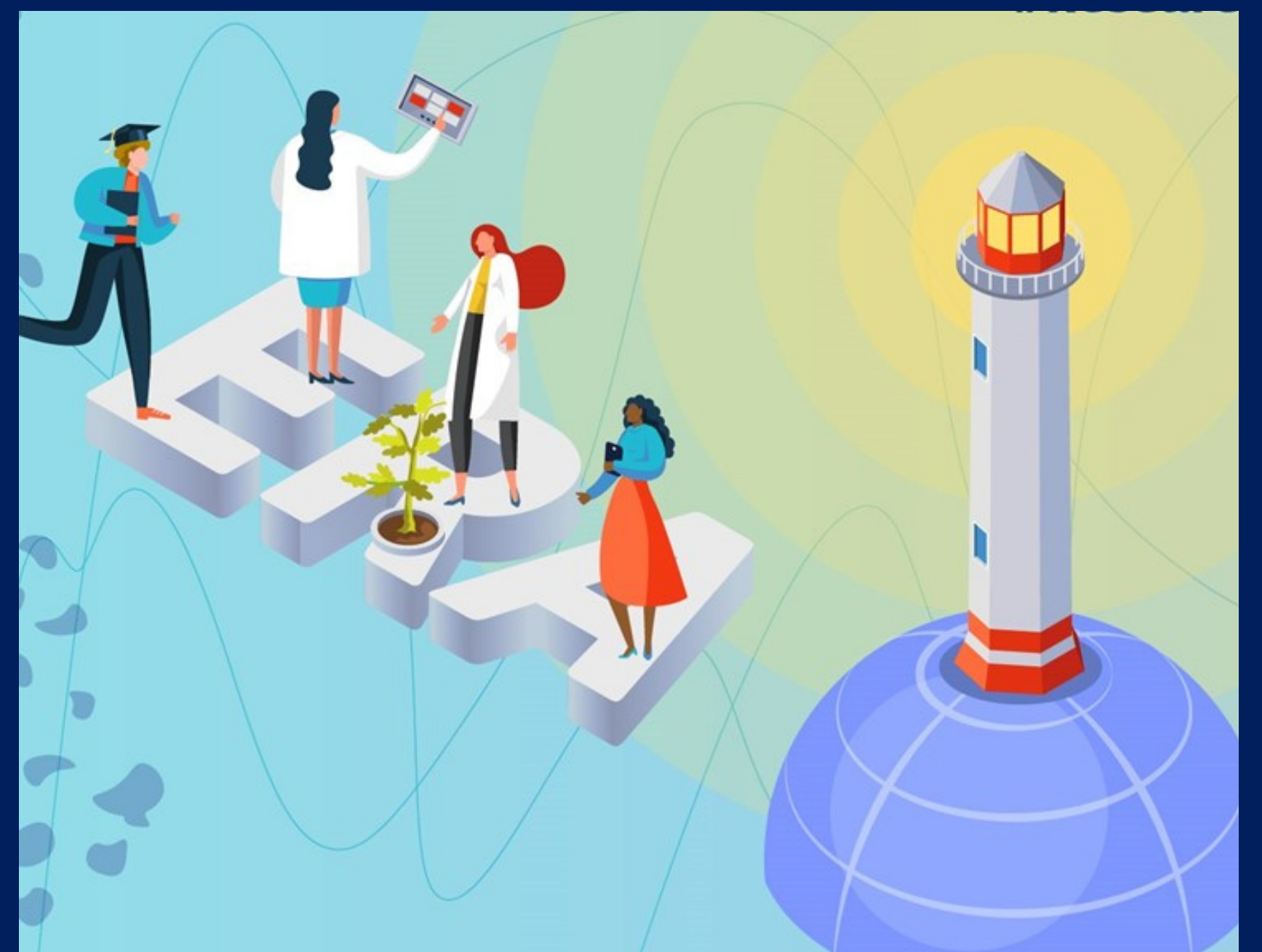
ERA Policy Actions

The WG's policy priorities are oriented by the actions of the "European Research Area" (ERA) Policy Agenda.

The brackets on the left indicate the respective targeted ERA actions.

Key Activities 2023/24

- ✓ Discuss the impact of Alliances on research cooperation
- ✓ Share best practice on dealing with the impact of Brexit and pending association of Switzerland
- ✓ Discuss the influence of Artificial Intelligence on RSO work
- ✓ Support CG advocacy for ambitious FP10



Extensive work on CG position paper on Horizon Europe mid-term review and interactions with journalists and the European Research Council in this regard.

Established a structured approach to policy papers including a consultation of all CG universities and relevant CG WGs.